

Know your consumption, optimize your installation

➤ Acti 9 iEM3000 series energy meters



Acti 9: The efficiency you deserve

Function	Acti 9 energy meters										Compare with PowerLogic power meters			
	iEM 3100	iEM 3110	iEM 3115	iEM 3150	iEM 3155	iEM 3200	iEM 3210	iEM 3215	iEM 3250	iEM 3255	PM 3200	PM 3210	PM 3250	PM 3255
Self powered	✓	✓	✓	✓	✓	✓	✓	✓	✓	✓				
External power (80-477 V)											✓	✓	✓	✓
Direct Measurement inputs (up to 63A)	✓	✓	✓	✓	✓									
Measurement inputs through CTs (1A, 5A)						✓	✓	✓	✓	✓	✓	✓	✓	✓
Measurement inputs through VTs									✓	✓	✓	✓	✓	✓
Active Energy measurements class (Total & partial kWh)	1	1	1	1	1	0.5S	0.5S	0.5S	0.5S	0.5S	0.5S	0.5S	0.5S	0.5S
Four Quadrant Energy measurements					✓					✓	✓	✓	✓	✓
Electrical measurements (I, V, P, ...)				✓	✓				✓	✓	✓	✓	✓	✓
Logs														✓
Multi-tariff (internal clock)			4		4			4		4		4	4	4
Multi-tariff (external control)			4		2			4		2				4
Measurement display (number of lines)	3	3	3	3	3	3	3	3	3	3	5+	5+	5+	5+
Digital inputs			2		1			2		1				2
Programmable digital outputs					1					1				2
Pulse output		✓					✓					✓		
Alarm					1					1		5	5	15
Modbus communication				✓	✓				✓	✓			✓	✓
MID (legal metrology certification)		✓	✓		✓		✓	✓		✓				

iEM3000 series energy meters

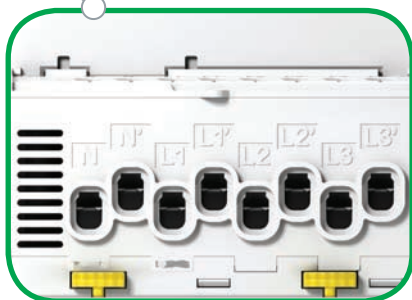
The right electrical meters for the right place for the right job

The Acti 9 iEM3000 series energy meters is a cost-attractive, feature-rich energy-metering offer ideal for helping your customers' installations become more energy efficient while reducing your own installation and commissioning costs thanks to their efficient design. The offer ranges from very basic kWh meters for the most basic applications to MID-compliant meters for billing applications to advanced energy meters able to measure a variety of electrical parameters. With the iEM3000 series energy meters located on the circuits with the Acti 9 system, you can gather the information necessary to optimize energy consumption and enable energy efficient practices.



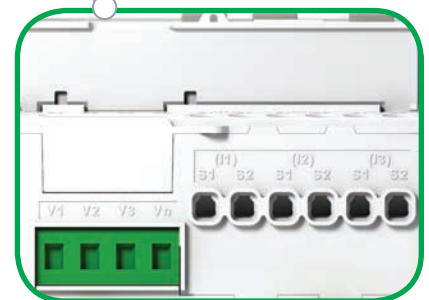
iEM3110

Same bottom design for all iEM3100 series meters



iEM3255

Same bottom design for all iEM3200 series meters



up to 1000

pulses/kWh adjustable pulse weight and width

+

MID certified for billing applications

100%

Compatible with Acti9 range

Simple & smart

Order with ease, minimize stock

- > Ten references to cover most installation requirements
- > Each meter supports 1P, 2P, 3P, and 3P+N wiring connections

Save installation time, costs and space

- > Bottom-to-bottom, direct connection up to 63 A (iEM31xx)
- > 1 A/ 5A CTs and PTs for connections greater than 63 A (iEM32xx)
- > Plastic aperture shaped to assist comb connection and fixation (iEM31xx)
- > Large connections with plastic aperture accommodate ferrules and increase user protection by limiting access conducted parts once the meter is installed (iEM31xx)
- > Separation of power (bottom) and communication (top) connections reduces risk of wrong wiring

Commission safely with ease

- > Current transformer isolation at the first measurement contact, no risk of potential error (iEM32xx)
- > Protected cages prevent contact to metallic part once cage is closed
- > LED indicators provide visual status (i.e., energized & communicating)

Use with confidence

- > Graphic display makes it easy to accurately read the descriptions of displayed values
- > Easy navigation for setup and display

Reliable & accurate

Accurate information

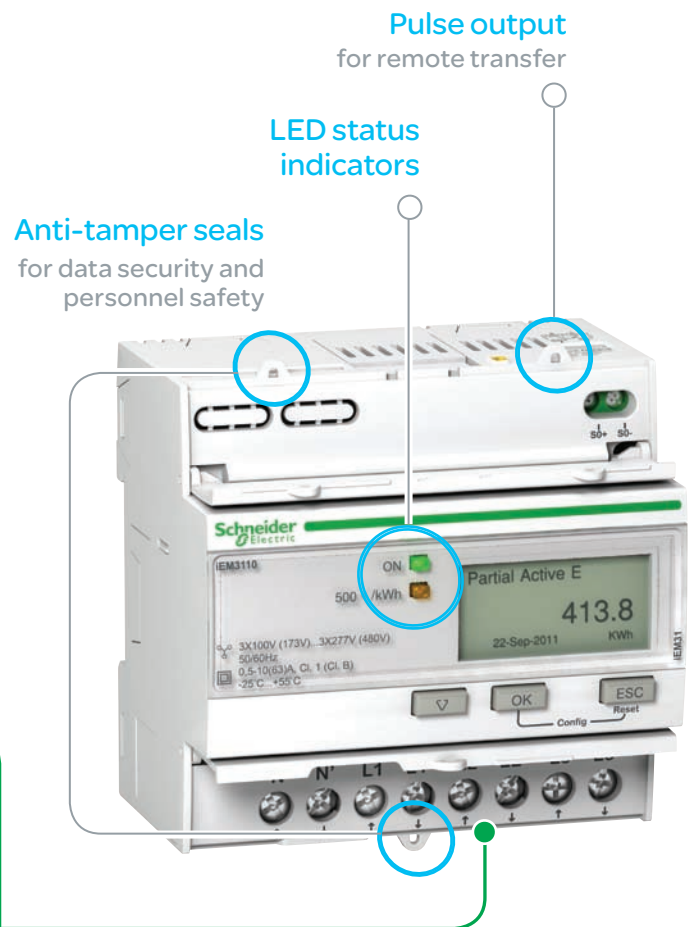
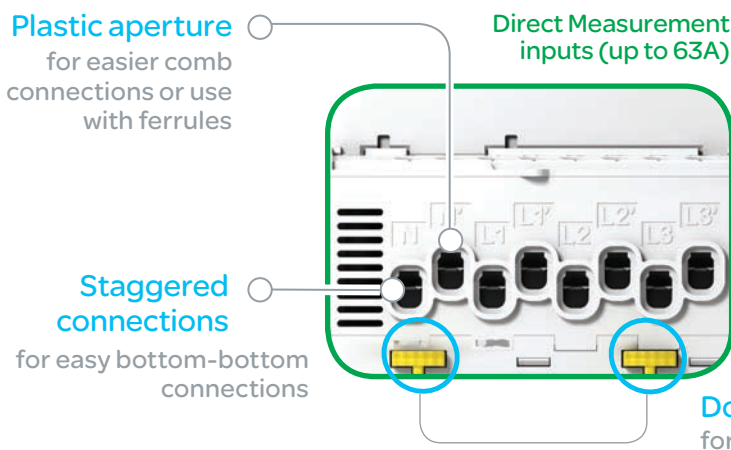
- > Accuracy class 1.0 and 0.5S (IEC 62053-21/22) for active energy metering
- > Compliance to regulations EN50470-3, IEC 61557-12, IEC 62053-21/22, IEC 62053-23

Data integrity

- > Anti-tamper sealing parts prohibit accessibility to all metering connections (voltage, current, DI/DO)
- > Save date/time of last reset to verify start of measurement campaigns, know if clock was altered

Robust design

- > Double fixation offers greater stability, allows installation vertically or in high-vibration environments
- > Well protected for normal use: IP40 on front face, IP20 inside cabinet



Efficient operation

Measurement parameters

- > Total and partial kWh to discover consumption behavior
- > Four-quadrant metering to differentiate energy
 - > Target green technologies (delivered/received)
 - > Help reduce utility penalties (active/reactive)
- > Additional parameters (P, Q, S, 3xI, V, PF, F) to help monitor network balance and overload behavior

Multiple tariffs

- > Save up to 4 different time slots to manage multiple tariffs (peak/off-peak, workday/weekend) (iEM3x15, iEM3x55)
- > Control tariffs via digital inputs, internal clock or communication

Digital inputs

- > Manage double-source applications (e.g., utilities and fuel generator)
- > Monitor circuit breaker status or cabinet door opening; control up to 4 tariffs
- > Use the meter as a pulse counter for another meter (WAGES)

Digital outputs

- > Use to trip a light or sound an alarm
- > Configure as a pulse output

Smart alarm

- > kW overload alarm helps prevent an overload before the circuit breaker trips (iEM3x55)

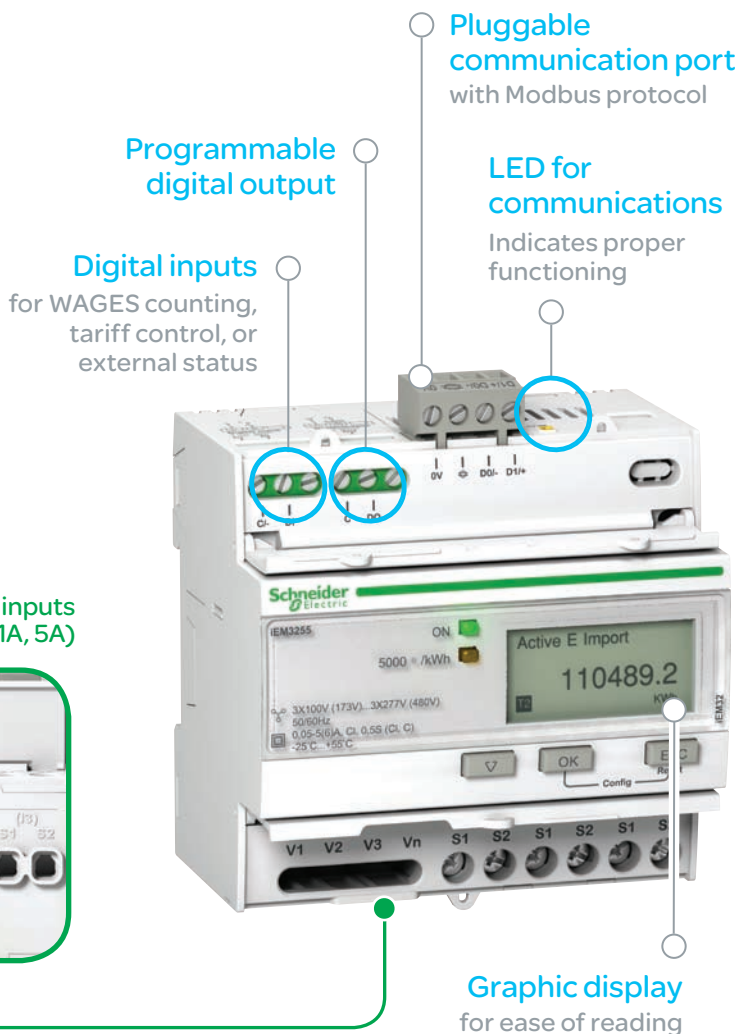
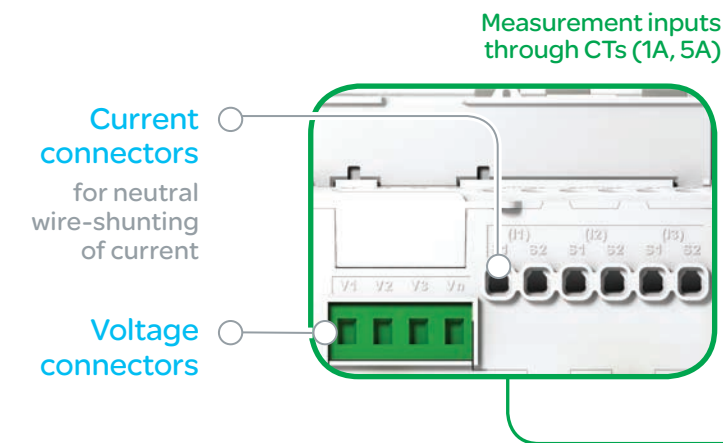
BENEFITS OF ENERGY MANAGEMENT APPLICATIONS

Optimize energy consumption & enable energy efficient practices

- > Collect and analyze all consumption data (WAGES) from each area for each type of load or circuit
- > Gain an accurate understanding of business expenses by allocating all energy-related costs
- > Implement actions designed to reduce energy consumption and promote energy efficiency

Monitor the energy consumption of tenants or customers and establish accurate invoices

- > Give accurate and achievable objectives for energy saving
- > Drive energy-efficient behavior



iEM3000 series energy meters are 100% compatible with the Acti 9 system

Smart Link



Acti 9 energy meters are fully compatible with the Acti 9 modular system, gathering device status and energy consumption data so that you can effectively manage the behavior of your electrical distribution system.

Make the most of your energySM

Schneider Electric Industries SAS

Head Office
35 rue Joseph Monier
92500 Rueil Malmaison Cedex- France
Tel.: +33 (0)1 41 29 70 00
www.schneider-electric.com

