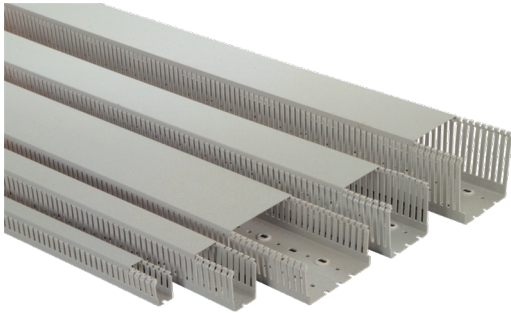


Catalogue No: T1-E 40X80 G

CABLE DUCT NARROW SLOT W40 x H80 x L2000mm

Termination and Wiring Systems > Cable Management > Cable Ducting and DIN Rail > Cable Duct > PVC Cable Duct > Narrow Slotted Duct - T1E



Cable Duct Narrow Slot W40xH80

The wire retainers with predetermined break-lines T1 slotted and T1E narrow slotted range has been widely accepted for its versatility and ability to withstand harsh conditions and environments. Ideal for small to medium size wiring jobs, this specially formulated PVC allows repeated opening and closing on the duct fingers without breaking. Where the ducting catches alight in the case of fire, the PVC properties of the cable ducting will allow the flame to extinguish. - Rigid PVC, RAL 7030 Grey - Self extinguishing - Complete with cover - High quality no-slip cover design - Standard lengths of 2 metres

Representative Photo Only
(actual product may vary based on configuration selections)

SPECIFICATIONS

Product Series	T1E
Component Type Termination Wiring	Cable Duct
Finger Wall Width	6 mm
Slot Opening Width	4 mm
Height with Cover	80 mm with cover
Glow Wire Rating	IEC 60695-2-1 960°C
Flammability Rating (UL94)	UL 94 V-0
VICAT Temperature	84 °C
Heat Deflection Temperature (HDT)	72 °C
Dielectric Strength	70 KV/mm V AC
Material	PVC
Colour	Stone Grey (RAL 7030)
Width	40 mm
Length	2000 mm
Package Quantity	1 qty
Standards Compliance	DIN EN ISO 1183 DIN EN ISO 306 DIN 52612 IEC 60243 IEC 60093
Certifications	CE CSA UR



Catalogue No: **T1-E 40X80 G**

CABLE DUCT NARROW SLOT W40 x H80 x L2000mm

Termination and Wiring Systems > Cable Management > Cable Ducting and DIN Rail > Cable Duct > PVC Cable Duct > Narrow Slotted Duct - T1E



REFERENCES

IECEX Certificate -

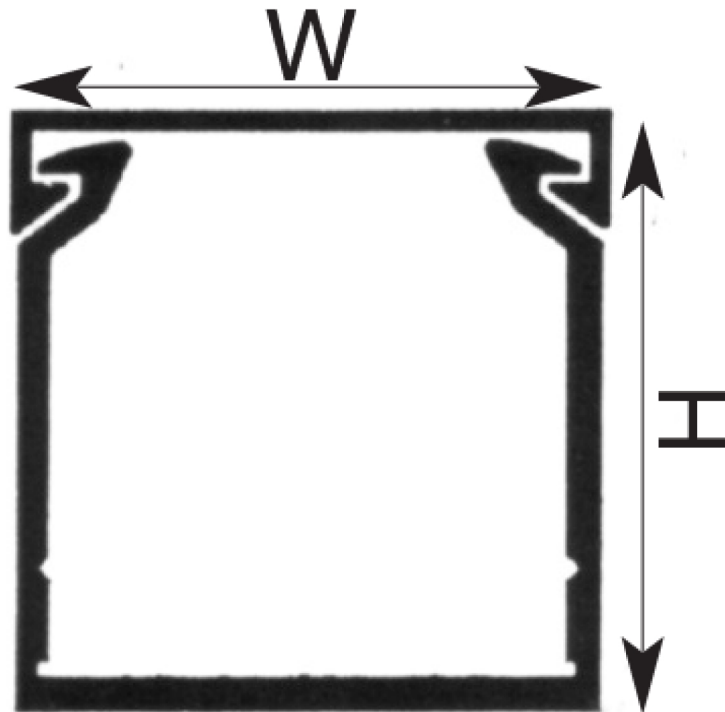
Supplier Declaration of Conformity: -

Installation Guide: -

User Manual: -

Manufacturer Datasheet: [T1E40X80G_Manufacturer Datasheet](#)

Manufacturer Catalogue & Product Selection: [T1E40X80G_Manufacturer Catalogue](#)



Dimension Diagram

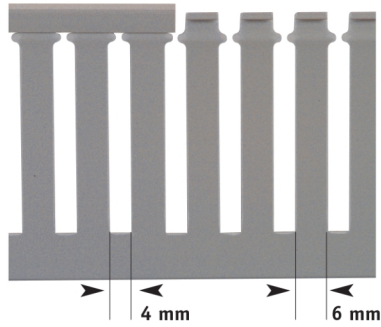
Catalogue No: **T1-E 40X80 G**

CABLE DUCT NARROW SLOT W40 x H80 x L2000mm

Termination and Wiring Systems > Cable Management > Cable Ducting and DIN Rail > Cable Duct > PVC Cable Duct > Narrow Slotted Duct - T1E



Heights of 40-60-80 and 100 mm have
a 4 mm slot opening width and
finger wall width of 6 mm



Technical Diagram