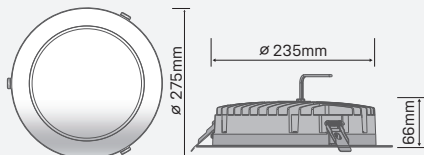


HELIX40W

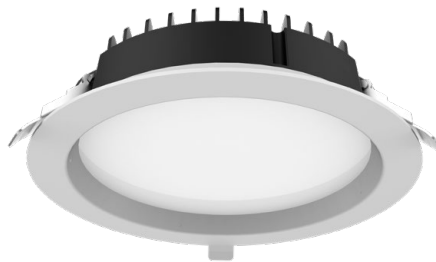
HELIX40W275R

SAP CODE: 2002047

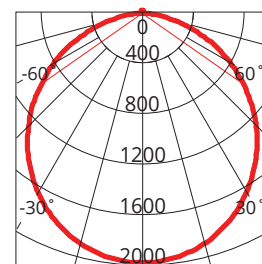


28/40W Tritone high output downlight

The HELIX series is a versatile aluminum low profile high output downlight with tritone colour temperature, and dual power intensity with IP54 rating.



Photometric Diagram



Unit: cd
C0/180 109.6deg
C90/270 109.6deg

KEY INFORMATION

Lumen Output	40W 28W	4000 / 4420 / 4320lm 2810 / 3170 / 3100lm
Input Power	40W / 28W	
Hole Cutout Size	Ø235mm	
Install	RECESSED	
Dimming Options	Non-Dimmable	
Fitting Colour	WHITE	
Warranty	4yr	
IP Rating	IP54	
IK Rating	N/A	
IC Rating	N/A	
Rebate Scheme Approvals	Pending Approval	

PHOTOMETRIC

Efficacy	40W 28W	100 / 111 / 108lm/W 100 / 113 / 111lm/W
LED	SMD	
CCT	3000 / 4000 / 5700K	
CRI	>80	
Beam Angle	100°	

ELECTRICAL

Driver	Remote
Supply Input	220-240V, 50/60Hz
Driver Output Voltage	32/46V DC
Power Factor	>0.9
LED Input Current (nominal)	850mA
Useful life @Ta25° (L70)	50,000hr

CONSTRUCTION

Housing	Aluminium ADC12
Optics	Polycarbonate Diffuser
Adjustable Angle	N/A
Fixings/Hardware	Rubberised Clip
Connection Type	1m Flex & Plug
Total Weight	1.45kg
Dimensions	Ø275 x 66mm
Operating Ambient Temp.	-20 to 45°C
Electrical Classification	Class 2