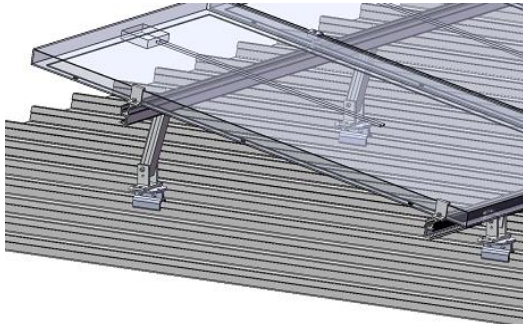


SolarRoof

Adjustable Tilt Legs, non-preassembly

- Assembly -

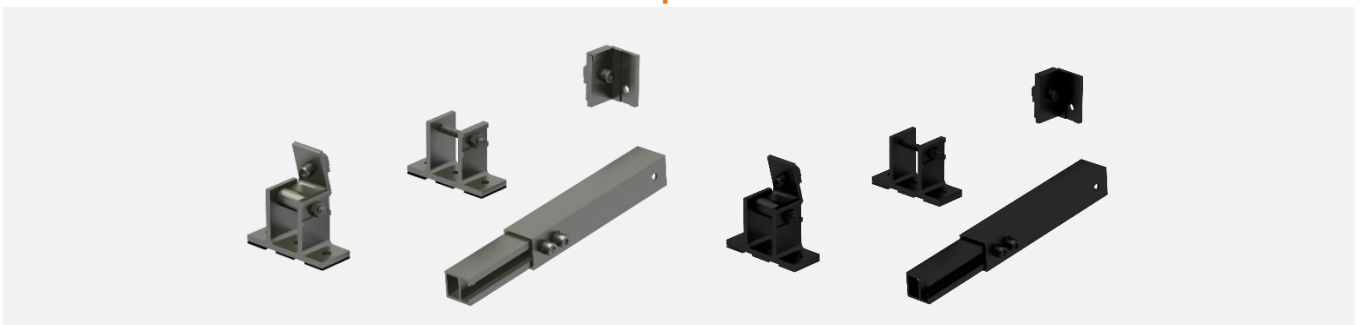


Install with Klip-lok Interface



Install on tin roof directly

- Component -

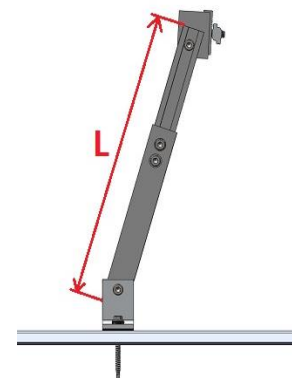


Adjustable Tilt Legs, non-preassembly

Part No.: ER-TL-10/15, ER-TL-10-15/BA, ER-TL-15/30, ER-TL-15/30/BA, ER-TL-30/60

- Technical Specification -

Screw Specification	2 x Buildex 14-11 x 70 (14 gauge, 6.3 mm, 11 TPI, 70 mm long) Hex Head Zips screw
Weight	ER-TL-10/15, ER-TL-10/15/BA: 1.056kg ER-TL-15/30, ER-TL-15/30/BA: 1.277 kg ER-TL-30/60: 1.764 kg
Packaging	ER-TL-10/15: 5 units per pack, 4 packs (20 units) per carton ER-TL-10/15/BA: 14 units per carton ER-TL-15/30: 20 units per carton ER-TL-15/30/BA: 14 units per carton ER-TL-30/60: 10 units per carton
Material	Tilt Legs: AL6005-T5; Fasteners: SUS304
Color	Silver (half-anodized no less than 10 µm) or Black (full-anodized)
Earthing	Yes
Standard	AS NZS1170.2-2011



Adjustable range for Rear Leg:

ER-TL-10/15, ER-TL-10/15/BA: 260-375 mm
ER-TL-15/30, ER-TL-15/30/BA: 390-635 mm
ER-TL-30/60: 675-1205 mm